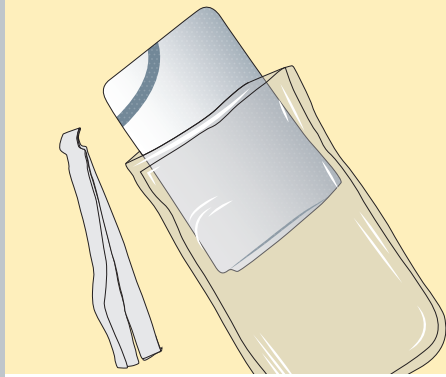
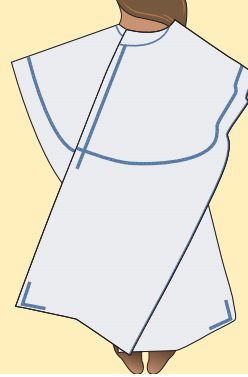


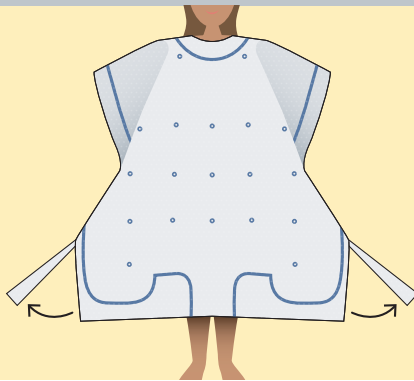
# Patient Warming Gown



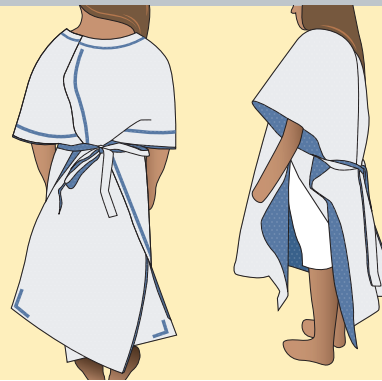
**1** Remove gown and adhesives from packaging. Unfold gown and retain adhesives for later (optional).



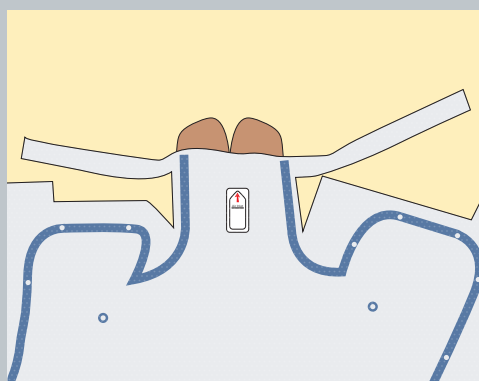
**2** Place gown over the patient's head and secure using the fastenings at the back. **BLUE TO BODY:** Ensure the dark blue side of the gown is towards the body.



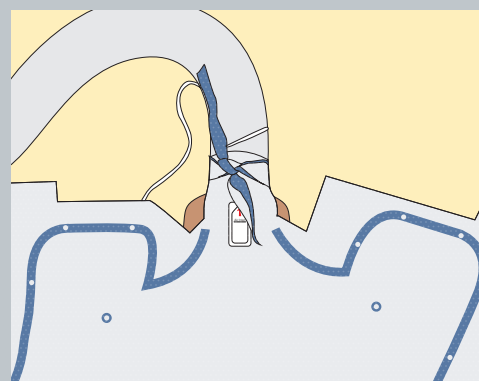
**3** Tear along both perforations at the sides (front) of the gown.



**4** Tie straps around patient's waist. Use double sided adhesive tapes to secure gown at sides (optional).



**5** Tear along both perforations at the bottom of the gown.



**6** Insert the hose into the air inlet and using the perforated material, tie and secure around the grey cuff of the hose.



Scan for more information & order codes

[www.gbukhealthcare.com](http://www.gbukhealthcare.com)



Scan the QR to contact your local Area Business Manager:

Email: [info@gbukenteral.com](mailto:info@gbukenteral.com)  
Main: +44 (0)1757 282 945



GBUKHealthcare  
Part of the GBUK Group